

The Haier logo is displayed in white text on a dark gray rectangular background in the top right corner of the page.

Haier

Vertical Freezer

HVF90VW, HVF170VW

<u>4 Safety information</u>	•	
<u>9 Intended Use</u>	•	
<u>10 Product Overview</u>	•	
<u>11 Control Panel</u>	•	
<u>12 Installation</u>	•	<u>Before first use</u> 12
		<u>Unpacking</u> 12
<u>14 Door Reversibility</u>	•	
<u>16 Use</u>	•	<u>Equipment</u> 17
<u>18 Energy Saving Tips</u>	•	
<u>19 Care and Cleaning</u>	•	
<u>21 Troubleshooting</u>	•	



Thank you for purchasing this Product.

Please read these instructions carefully before using this appliance. The instructions contain important information which will help you get the best out of the appliance and ensure safe and proper installation, use and maintenance.

Keep this manual in a convenient place so you can always refer to it for the safe and proper use of the appliance.

If you sell the appliance, give it away, or leave it behind when you move house, make sure you also pass on this manual so that the new owner can become familiar with the appliance and safety warnings.

Accessories

Check the accessories and literature in accordance with this list:



User manual



Shovel manual
defrost



WARNING – Important Safety information



NOTICE-General information and tips



Environmental information



Disposal

Help protect the environment and human health. Put the packaging in applicable containers to recycle it. Help to recycle waste of electrical and electronic appliances. Do not dispose of appliances marked with this symbol with the household waste. Return the product to your local recycling facility or contact your municipal office.



WARNING: Risk of fire/flammable material

The symbol indicates there is a risk of fire since flammable materials are used. Take care to avoid causing a fire by igniting flammable material.



WARNING!

Risk of injury or suffocation!

Refrigerants and gases must be disposed of professionally. Ensure that the tubing of the refrigerant circuit is not damaged before being properly disposed of. Disconnect the appliance from the mains supply. Cut off the mains cable and dispose of it. Remove the trays and drawers as well as the door catch and seals to prevent children and pets to get closed in the appliance.



Before switching on the appliance for the first time read the following safety hints:



WARNING!

Before first use

- ▶ Make sure there is no transport damage.
- ▶ Remove all packaging and keep out of children's reach.
- ▶ Wait at least two hours before installing the appliance in order to ensure the refrigerant circuit is fully efficient.
- ▶ Handle the appliance always with at least two persons because it is heavy.

Installation

- ▶ The appliance should be placed in a well-ventilated place. Ensure a space of at least 5 cm above and around the appliance.
- ▶ Never place the appliance in a damp area or location where it might be splashed with water. Clean and dry water splashes and stains with a soft clean cloth.
- ▶ Do not install the appliance in direct sunlight or near heat sources (e.g. stoves, heaters).
- ▶ Install and level the appliance in an area suitable for its size and use.
- ▶ Keep ventilation openings in the appliance or in the in-built structure clear of obstruction.
- ▶ Make sure that the electrical information on the rating plate agrees with the power supply. If it does not, contact an electrician.
- ▶ The appliance is operated by a 220–240 VAC/50 Hz power supply. Abnormal voltage fluctuation may cause the appliance to fail to start, or damage to the temperature display or compressor, or there may be an abnormal noise when operating. In such case, an automatic regulator shall be mounted.
- ▶ Do not use multi-plug adapters and extension cables.
- ▶ Do not locate multiple portable socket-outlets or portable power supplies at the rear of the appliance.
- ▶ Ensure that the power cable is not trapped by the refrigerator. Do not step on the power cable.



WARNING!

- ▶ Use a separate earthed socket for the power supply which is easy accessible. The appliance must be earthed.
- ▶ Do not damage the refrigerant circuit.

Before first use

- ▶ This appliance can be used by children aged from 8 years and above and person with reduced physical, sensory or mental capabilities or lack of experience and knowledge if they have been given supervision or instruction concerning use of the appliance in a safe way and understand the hazards involved.
- ▶ Children aged from 3 to 8 years are allowed to load and unload, but not allowed to clean or install the refrigerating appliances.
- ▶ Keep away children under 3 years of age from the appliance unless they are constantly supervised.
- ▶ Children shall not play with the appliance.
- ▶ Keep ventilation openings in the appliance or in the in-built structure clear of obstruction.
- ▶ If cool gas or other inflammable gas is leaking in the vicinity of the appliance, turn off the valve of the leaking gas, open the doors and windows and do not unplug in the power cable of the refrigerator or any other appliance.
- ▶ Notice that the appliance, for example HVF90VW、HVF170VW, is set for operation at a specific ambient range between 16 °C and 43°C. The appliance may not work properly if it is left for a long period at a temperature above or below the indicated range.
- ▶ Do not pull on the door shelves. The door may be pulled slant, the bottle rack, may be pulled away, or the appliance may topple.
- ▶ Open and close the doors only with the handles. The gap between the doors and the cabinet is very narrow. Do not extend your hands in these areas to avoid pinching your fingers. Open or close the refrigerator doors only when there are no children standing within the range of door movement.



WARNING!

- ▶ Risk of child entrapment. Before you throw away your old refrigerator or freezer, the doors and panels should be removed and the racks left in place so that children may not easily climb inside.



WARNING!

- ▶ Do not store or use inflammable, explosive or corrosive materials in the appliance or in the vicinity.
- ▶ Do not store medicines, bacteria or chemical agents in the appliance. This appliance is a household appliance. It is not recommended to store materials that require strict temperatures.
- ▶ Never store liquids in bottles or cans (besides high percentage spirits) especially carbonated beverages in the freezer, as these will burst during freezing.
- ▶ Check the condition of food if a warming in the freezer has taken place.
- ▶ Do not set unnecessarily low temperature in the refrigerator compartment. Minus temperatures may occur at high settings. Attention: Bottles can burst.
- ▶ Do not touch frozen goods with wet hands (wear gloves). Especially do not eat ice lollies immediately after removal from the freezer compartment. There is the risk to freeze or the formation of frost blisters. First aid: keep immediately under running cold water. Do not pull away!
- ▶ Do not touch the inside surface of the freezer storage compartment when in operation, especially with wet hands, as your hands may freeze onto the surface.
- ▶ Unplug the appliance in the event of a power interruption or before cleaning. Allow at least 7 minutes before restarting the appliance, as frequent starting may damage the compressor.
- ▶ Do not use electrical devices inside the food storage compartments of the appliance, unless they are of the type recommended by the manufacturer. Maintenance / cleaning.
- ▶ Make sure children are supervised if they carry out cleaning and maintenance.
- ▶ Disconnect the appliance from the electrical supply before undertaking any routine maintenance. Allow at least 5 minutes before restarting the appliance, as frequent starting may damage the compressor.
- ▶ When positioning the appliance, ensure the supply cord is not trapped or damaged.
- ▶ Do not locate multiple portable socket-outlets or portable power supplies at the rear of the appliance.
- ▶ Do not use electrical appliances inside the food storage compartments of the appliance, unless they are of the type recommended by the manufacturer.
- ▶ Do not store explosive substances such as aerosol cans with a flammable propellant in this appliance.



WARNING!

- ▶ Hold the plug, not the cable, when unplugging the appliance.
- ▶ Do not clean the appliance with hard brushes, wire brushes, detergent powder, petrol, amyl acetate, acetone and similar organic solutions, acid or alkaline solutions. Please clean with special refrigerator detergent to avoid damage.
- ▶ Do not scrape off frost and ice with sharp objects. Do not use sprays, electric heaters, hair dryer, steam cleaners or other sources of heat in order to avoid damage to the plastic parts.
- ▶ Do not use mechanical devices or other means to accelerate the defrosting process, other than those recommended by the manufacturer.
- ▶ If the supply cord is damaged, it must only be replaced by your Fisher & Paykel Appliances Authorised Service Centre.
- ▶ Do not try to repair, disassemble or modify the appliance by yourself. In Case of repair please contact our customer service.
- ▶ Eliminate the dust on the back of the unit at least once a year to avoid hazard by fire, as well as increased energy consumption.
- ▶ Do not spray or flush the appliance during cleaning.
- ▶ Do not use water spray or steam to clean the appliance.
- ▶ Do not clean the cold glass shelves with hot water. Sudden temperature change may cause the glass to break.

Refrigerant gas information



WARNING!

The appliance contains the flammable refrigerant ISOBUTANE (R600a). Make sure the refrigerant circuit is not damaged during transportation or installation. Leaking refrigerant may cause eye injuries or ignite. If damage has occurred, keep away open fire sources, thoroughly ventilate the room, do not plug or unplug the power cords of the appliance or any other appliance. If the refrigerant gets into your eyes with the refrigerant, rinse immediately it under running water and call an eye specialist immediately.

QLD Gas note: It is hazardous for anyone other than an Authorised Service Person to service this appliance. In Queensland- the authorized Service Person MUST hold a Gas Work Authorisation for hydrocarbon refrigerants, to carry out Servicing or repairs which involve the removal of covers.



Intended use

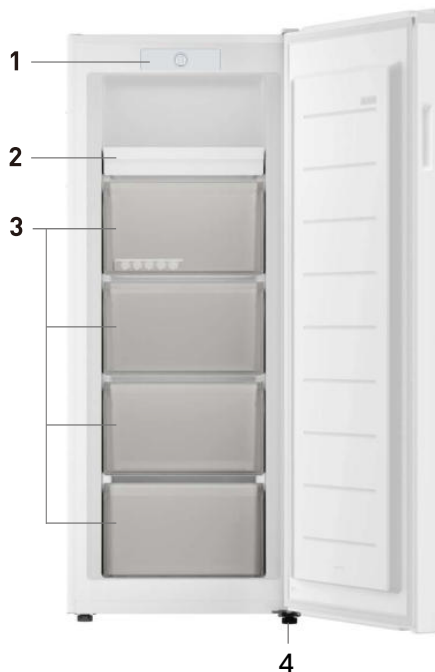
This appliance is intended for freezing food. It has been designed exclusively for use in household and similar applications such as staff kitchen areas in shops, offices and other working environments; farm houses and by clients in hotels, motels and other residential type environments as well as in bed-and-breakfast and catering business. It is not intended for commercial or industrial use. Changes or modifications to the device are not allowed. Unintended use may cause hazards and loss of warranty claims.



NOTICE

Due to technical changes and different models, some of the illustrations in this manual may differ from your model.

HVF170VW



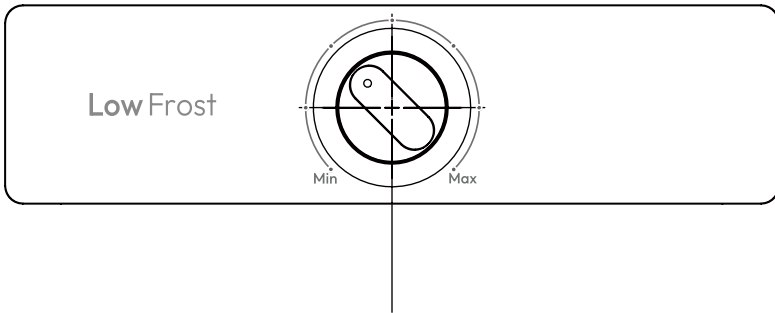
HVF90VW



- 1 Control panel
- 2 Plastic shelves
- 3 Drawers
- 4 Adjustable feet



Display panel



Temperature control (Thermostat)



NOTICE

Turn thermostat to adjust the cooling between MIN (warmer) and MAX(colder). The storage temperature will decrease as you move from the MIN to the MAX setting.

Note

- ▶ If the ambient temperature around the freezer is high and the cooling level is set high, ice formation may not stop, and the cabinet temperature could become too low.
- ▶ If the ambient temperature around the refrigerator is low and the cooling level is set too low, the freezer may not operate properly. This can cause the temperature inside the unit to rise, which is not ideal for food storage and preservation.
- ▶ After adjusting the temperature, it will take some time for the interior to stabilize. The time required depends on the cooling level set, the surrounding temperature, how often the door is opened, and the amount of food stored inside.

Before first use

- ▶ Remove all packaging materials. Keep them out of children's reach and dispose of them responsibly.
- ▶ Clean both the inside and outside of the appliance using water and a mild detergent. Dry thoroughly with a soft cloth.
- ▶ After leveling and cleaning the appliance, wait at least 2 hours before plugging it in. (See the INSTALLATION section for more details.)
- ▶ Pre-cool the compartments before placing food inside.

Unpacking



WARNING!

- ▶ The appliance is heavy. Always handle with at least two persons.
- ▶ Keep all packaging materials out of children's reach and dispose them in an environmentally friendly manner.
- ▶ Take the appliance out of the packaging.
- ▶ Remove all packaging materials.

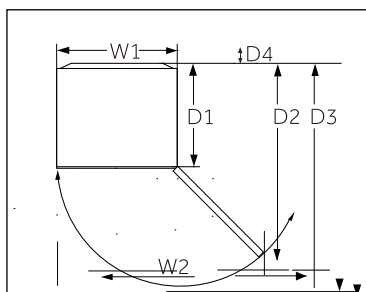
Environmental conditions

Keep the room temperature between 10°C and 43°C. Temperatures outside this range can affect the appliance's performance and energy use.

Avoid placing the appliance near heat sources like ovens or other refrigerators.

Recommended Space

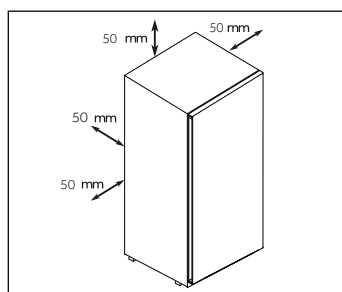
Recommended space when door is opened.



Width in mm		Depth in mm			Distance to wall in mm	Model identifier
W1	W2	D1	D2	D3	D4	
545	824	500	1002	1064	50	HVF90VW
545	824	500	1002	1064	50	HVF170VW

Recommended Space

For safe and effective operation, ensure proper ventilation around the appliance. Follow the recommended ventilation guidelines shown in the diagrams.

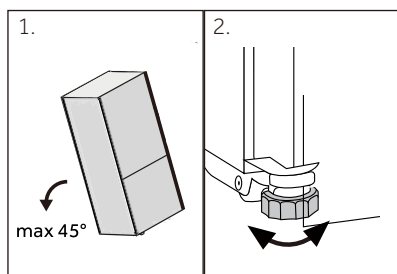


Aligning the appliance

The appliance should be placed on a flat and solid surface.

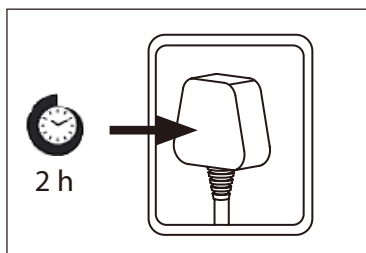
1. Tilt the refrigerator slightly backwards.
2. Set the feet to the desired level.

Make sure the distance to the wall on the hinge side is at least 50 mm for the door to open properly.



NOTICE

For a free standing appliance: this refrigerating appliance is not intended to be used as a built-in appliance.



Waiting time

After moving the fridge, let it sit upright for at least 2 hours before plugging it in. This allows the internal oil to settle properly, helping the fridge run smoothly.

Electrical connection

Before each connection check if:

- Power supply, socket and fusing are appropriate to the rating plate.
- The power socket is earthed and no multi-plug or extension.

Connect the plug to a properly installed household socket.



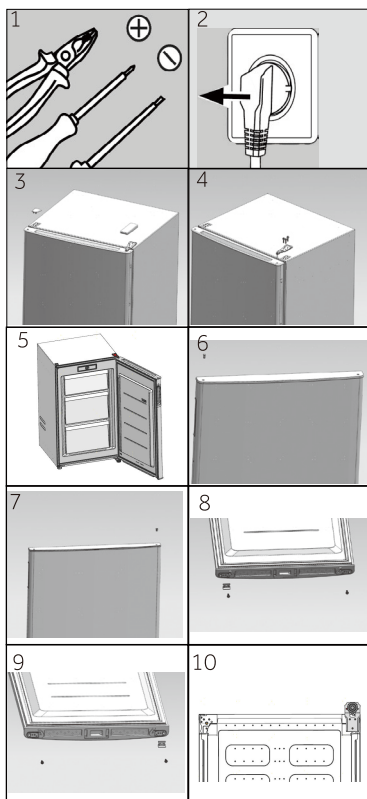
WARNING!

To avoid risks a damaged power cord must be replaced by the customer service.



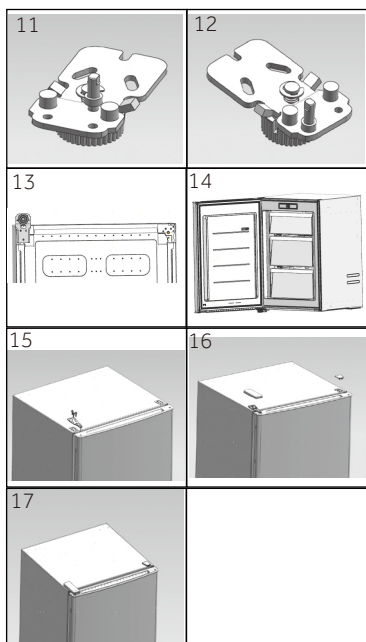
WARNING!

- ▶ The appliance is heavy. You need two persons to reverse the door.
- ▶ Always unplug the appliance before starting.
- ▶ Do not tilt the appliance more than 45° to prevent damage of the refrigeration system.



Assembly steps

1. You will need a Phillips screwdriver and a spanner.
2. Unplug the appliance.
3. Remove the top hinge cover and the hinge hole cover.
4. Remove 3 screws and hinge.
5. Open and remove the door.
6. Remove hole cover on top left of door.
7. Fix the cover in right side of door.
8. Turn the door upside down, remove 2 screws and door stopper at the bottom of the door.
9. Fix door stopper dismantled last step to the other side and 2 screws.
10. Tilt slightly backwards the cabinet, remove 3 screws, the lower hinge and adjustable feet.



11. Remove hinge pin.

12. Insert hinge pin into the hole on the opposite side.

13. Fix the hinge to the opposite position of the cabinet with 4 screws and adjustable feet.

14. Mount the door.

15. Fix upper hinge with 3 screws.

16. Fix hinge hole cover and upper left hinge cover.

17. Remove step 17.

Tips on storing fresh food

- Keep the freezer temperature at -18°C .
- Hot food should be cooled to room temperature before storing in the freezer compartment.
- Food cut into small portions will freeze faster and be easier to defrost and cook. The recommended weight for each portion is less than 2.5 kg.
- It is better to pack food before putting it into the freezer. The outside of the packaging must be dry to avoid bags sticking together. Packaging materials should be odour-free, airtight, non-poisonous and nontoxic.
- In order to avoid expiration of storage periods, please note the freezing date, time limit and name of the food on the packaging according to the storage periods of different foods.

Tips on storing commercially frozen foods

- Always follow the manufacturers time guidelines on the packaging.
- Try to keep the length of time between purchase and storage as short as possible to preserve food quality.
- Buy frozen food, which has been stored at a temperature of -18°C or below.
- Avoid buying food which has ice or frost on the packaging – This indicates that the products might have been partially defrosted and refrozen at some point – temperature rising affects the quality of food.



WARNING!

Acid, alkali and salt etc. could erode the internal surface of the freezer.

- Do not place the food with these substances (e.g. sea fish) directly on the internal surface. Salt water in the freezer should be cleaned up immediately.
- Do not exceed the food storage time recommended by the manufacturers. Only take the required amount of food out of the freezer.
- Consume defrosted food quickly. Defrosted food cannot be refrozen unless it is first cooked, otherwise it may be less edible.
- Do not load excessive quantities of fresh food in the freezer compartment. Refer to the freezing capacity of the freezer.
- While freezing fresh food, avoid bringing them in contact with already frozen food due to the risk of thawing!



Equipment



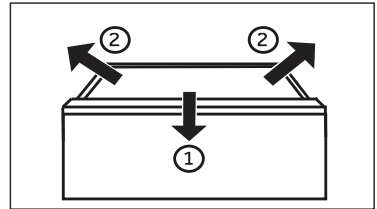
NOTICE

Due to different models, your product may not have all of the following features. Please refer to section Product Description.

Removable drawer

To remove the drawer out, pull out to the maximum extension the lift and remove.

In order to insert the drawer, the above steps repeat above in reverse order.





Energy saving tips

- ▶ Make sure the appliance is properly ventilated (see INSTALLATION).
- ▶ Do not install the appliance in direct sunlight or near heat sources (e.g. stoves, heaters).
- ▶ Avoid unnecessarily low temperatures in the appliance. Energy use increases as the temperature is set lower.
- ▶ Allow warm food to cool down before placing it in the appliance.
- ▶ Open the appliance door as little and briefly as possible.
- ▶ Do not overfill the appliance to avoid obstructing the air flow.
- ▶ Avoid air within the food packaging.
- ▶ Keep door seals clean so that the door always closes correctly.
- ▶ The most energy-efficient setup uses the drawers, food box, and shelves to be positioned in the appliance in the default factory position, and food to be placed without blocking the air outlet of the duct.



WARNING!

Disconnect the appliance from the power supply before cleaning.

Clean

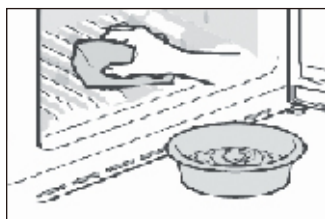
Clean the appliance when there is little or no food inside.

Clean the appliance every four weeks to maintain hygiene and prevent food odours.



WARNING!

- ▶ Do not clean the appliance with hard brushes, wire brushes, detergent powder, petrol, amyl acetate, acetone and similar organic solutions, acid or alkaline solutions. Please clean with refrigerator-safe cleaner.
- ▶ Do not spray or flush the appliance during cleaning.
- ▶ Do not use water spray or steam to clean the appliance.
- ▶ Do not clean the cold glass shelves with hot water. Sudden temperature change may cause the glass to break.
- ▶ Do not touch the inside surface of the freezer storage compartment, especially with wet hands, as your hands may freeze onto the surface.



- ▶ Always keep the door gasket clean.
- ▶ Wipe the inside and outside of the appliance with a sponge and mild detergent.

Please scrub the interior and exterior of the refrigerator, including door sealing, door rack, glass shelves, compartments, and other removable parts..., with a soft towel or sponge dipped in warm water (you may add neutral detergent into the warm water).

- ▶ If there is liquid spilled, remove all the contaminated parts, directly rinse with running water, dry and place it back into the fridge.
- ▶ If there is spilled cream (such as the cream, melting ice cream), please remove all the contaminated parts, put into the warm water with about 40 °C for several minutes, then rinse with water, dry and place it back into the fridge.
- ▶ In case some small part or component gets stuck inside of the fridge (between shelves or drawers), use small soft brush to release it. If you cannot reach the part, please contact customer service
- ▶ Rinse and dry with soft cloth.
- ▶ Do not clean any of the parts of the appliance in a dishwasher.
- ▶ Allow at least 7 minutes before restarting the appliance as frequent starting may damage the compressor.

Non-use for a longer period

If the appliance is not used for an extended period of time:

Take out the food.

Unplug the power cord.

Clean the appliance as described above.

Leave the doors open to prevent unpleasant odours.



NOTICE

Turn the appliance off only if strictly necessary.

Moving the appliance

1. Remove all food and unplug the appliance.
2. Tape down shelves and other loose parts in the fridge and freezer.
3. Do not tilt the refrigerator more than 45° to avoid damaging the refrigerating system.



WARNING!

- ▶ Do not lift the appliance by its handles.
- ▶ Never place the appliance horizontally on the ground.



Many common issues can be solved without expert help.
Please check the suggestions below before contacting after-sales service.



WARNING!

- ▶ Unplug the appliance before maintenance.
- ▶ Electrical equipment should be serviced only by qualified electrical experts, because improper repairs can cause considerable consequential damages.
- ▶ Power cords must be replaced by the manufacturer or a qualified service technician.

Problem	Possible Cause	Possible Solution
The inside of the refrigerator is dirty and/or smells.	<ul style="list-style-type: none"> • The inside of the refrigerator needs cleaning. • Food of strong odour is stored in the refrigerator. 	<ul style="list-style-type: none"> • Clean the inside of the refrigerator. • Wrap food thoroughly.
It is too warm.	<ul style="list-style-type: none"> • The temperature is set too high. • Too warm goods has been stored. • Too much food has been stored at one time. • The goods are too close to each other. • A door/drawer of the appliance is not tightly closed. • The door/drawer has been opened too frequently or for too long. 	<ul style="list-style-type: none"> • Set the temperature to a colder setting. • Always cool down goods before storing them. • Always store small quantities of food. • Leave space between food items for air to circulate • Close the door/drawer. • Do not open the door/drawer too frequently.
It is too cold.	<ul style="list-style-type: none"> • The temperature is set too low. 	<ul style="list-style-type: none"> • Set the temperature to a warmer setting.
Moisture accumulates on the refrigerators outside surface or between the doors/drawer and drawer.	<ul style="list-style-type: none"> • The climate is too warm and too damp. • The door is not closed tightly. The cold air in the appliance and the warm air outside it condensates. 	<ul style="list-style-type: none"> • This is normal in damp climate and will change when the humidity decreases. • Ensure that the door/drawer is tightly shut.

Troubleshooting

Problem	Possible Cause	Possible Solution
Ice and frost in the freezer compartment.	<ul style="list-style-type: none"> • A defrost is required. • The goods were not adequately packaged. • A door/drawer of the appliance is not tightly closed. • The door/drawer has been opened too frequently or for too long. • The door/drawer gasket is dirty, worn, cracked or mismatched. • Something on the inside prevents the door/drawer to close properly. 	<ul style="list-style-type: none"> • Defrost according to the instructions in this guide. • Always pack the goods well. • Close the door/drawer. • Do not open the door/drawer too frequently. • Clean the door/drawer gasket or replace them by new ones. • Reposition the shelves, door racks, or internal containers to allow the door/drawer to close.
The sides of the cabinet and door strip get warm.	<ul style="list-style-type: none"> • - 	<ul style="list-style-type: none"> • This is normal.
The appliance makes abnormal sounds.	<ul style="list-style-type: none"> • The appliance is not located on level ground. • The appliance is in contact with nearby objects. 	<ul style="list-style-type: none"> • Adjust the feet to level the appliance. • Remove objects around the appliance.
A slight sound is to be heard similar to that of flowing water.	<ul style="list-style-type: none"> • - 	<ul style="list-style-type: none"> • This is normal.
You will hear a faint hum.	<ul style="list-style-type: none"> • The anti-condensation system is working. 	<ul style="list-style-type: none"> • This prevents condensation and is normal.



Power interruption

In the event of a power cut,

- ▶ Open the door/drawer as few times as possible.
- ▶ Do not put additional food into the appliance during a power cut.
- ▶ If you're notified in advance, place a container of ice at the top of the refrigerator to help keep it cool.
- ▶ Check the condition of the food as soon as the power returns.
- ▶ Since the temperature will rise during a power cut, food quality and storage time may be affected. Any food that has defrosted should be eaten promptly or, if suitable, cooked and refrozen.

Haier

WWW.HAIER.COM.AU
WWW.HAIER.CO.NZ



0070520557